

Petrochemical & Refining

MPW plays a vital role in minimizing the time required for plant turn-arounds, which translates into millions of dollars saved for petrochemical plants and refineries. Customers benefit from MPW's myriad of services, returning efficiencies to all critical areas of the plant. MPW services are performed in nearly every process location including:

- Activated Carbon Columns
- Alkylation Unit
- API Separators
- Bio-Ponds
- Catalytic Cracking Unit
- Continuous Coker
- Cooling Towers
- Crude Lines
- Crude Oil Storage
- Delayed Coker
- Fresh Water Desalter
- Fire Protection Lines
- Heat Exchangers
- Light Ends Unit
- Process Piping
- Raw Water Treatment
- Reactors
- Storage Tanks
- Towers
- Wastewater Treatment

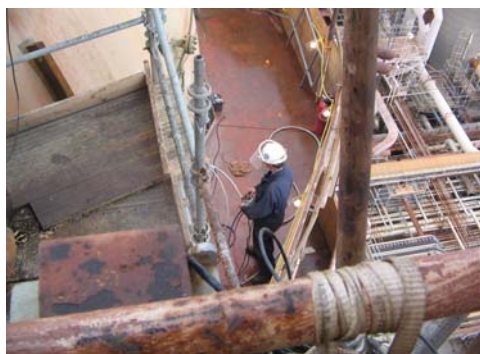


MPW's OSHA trained field personnel utilize proprietary and patented tooling during hydroblasting and vacuuming projects when cleaning heat exchangers, reactors, towers and above ground storage tanks for API 653 inspection. Pigging applications remove heavy sediment from process lines, crude line and fire protection lines.

MPW understands the importance of keeping your equipment running at maximum performance. MPW works closely with petrochemical facilities and refineries to develop innovative industrial cleaning techniques to improve productivity, quality and environmental compliance. MPW is well positioned to perform this work in a preventative maintenance mode periodically to prevent

Typical applications include:

- Dry Ice Blasting
- Facility Management
- Hydro Excavation
- Line Moleing
- Pressure Washing
- Regen Head Cutting
- Sewer Line Cleaning
- Sludge Dewatering
- UHP Cleaning/Cutting (40k psi)
- Vacuuming Services
- Vapor Line Cleaning
- Video Inspection
- Waterblasting/Lancing (10k-20k psi)
- Water Purification Services



For regularly scheduled cleaning, emergency response or outage support, MPW has the qualified team of professionals to meet your needs.

Contact your local MPW Representative today for more information on MPW's SERVICE capabilities.